



"You can't help but bring the expertise, passion, knowledge and understanding of all those things back into what we do inside the walls of the school. And in doing so that enriches and makes this a better place for learning to happen."

(Garry Reeve, Advisory Teacher)

LEAVING TO LEARN - 2 DAY WORKSHOP

How to implement a Learning Through Internship (LTI) program in your school

SYDNEY, NSW

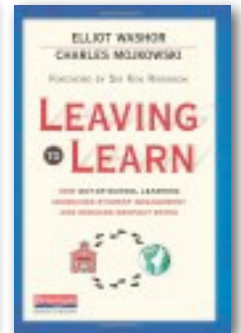
AUGUST 11 & 12 - 2014

Facilitator:

Viv White, Co-Founder BPEA

" We have a bold strategy for revitalising schools and for graduating and preparing students for success in their future learning and work. This 'leaving to learn' strategy is driven by our image of that future. Our goal is not merely to graduate every student but to prepare graduates who are uncommonly ready for success in their workplaces, their families and their communities."

(Elliot Washor and Charles Mojkowski, Co-Authors "Leaving to Learn")



This two day workshop is for high school teachers involved in the Big Picture Education design for real-world learning known as 'Learning Through Internship'.

In this design, students learn from a mentor with whom they share an interest, by working two days a week over an extended period, while completing an authentic project that benefits both mentor and student.

In the course we will explore:

- the design and implementation of the **Learning Through Internship (LTI)** program
- factors that distinguish LTI from traditional internship programs
- ways to assist students with the development of useful and rigorous real-world projects
- ways to integrate LTI project work with students' learning goals and school-based study
- the mentor relationship – how to recruit, network, support and retain good community mentors.

Contact us for more information

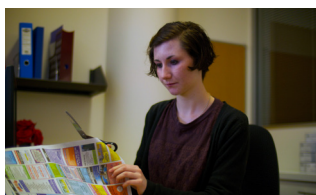
Phone: (02) 9590 5341 Fax: (02) 9590 3416

Email: info@bigpicture.org.au

Web: <http://www.bigpicture.org.au>

"It's incredibly valuable as part of our contribution to the wider community and to the wider society."

(Malcom, mentor)



LEAVING TO LEARN - 2 DAY WORKSHOP

CREDIT:

A **Statement of Attainment** will be awarded upon successful completion of the course and assessments.

This course aligns with **BSBLED705A Plan and implement a mentoring program** from BSB07 Business Services Training Package.

Participants will also receive a **Record of Participation** certificate.



NSW
Institute of
Teachers



RTO No. 22106

NSW Institute of Teachers' endorsed provider of Institute Registered professional development for the maintenance of accreditation at Proficient Teacher/Professional Competence.

LOCATION:

Big Picture Education Sydney Office

Level 1, 5 Saywell St, Marrickville

COST: (ALL PRICES ARE PLUS GST)

\$600 per participant

\$480 per participant if a member of BPEA or ANSN

\$540 per participant if more than one person from an organisation/school

\$420 per participant if more than one person from a member organisation/school

REGISTRATION DETAILS:

Organisation/ School: _____

Address: _____

Telephone: _____ Email: _____

BPEA member? Location: Newcastle Launceston

Participant Name	Email	Dietary Requirements?