

**Big Picture**

EDUCATION AUSTRALIA

ONE STUDENT AT A TIME IN  
A COMMUNITY OF LEARNERS

SMALL SCHOOLS BY DESIGN

# YOUR BIG PICTURE JOURNEY

**SUPPORT, COACHING AND NETWORKING**



# THE BIG PICTURE

**Big Picture Education Australia supports young people to become lifelong learners, productive workers and engaged human beings. Big Picture students pursue their interests; their passion drives the learning.**

Big Picture creates personalised education programs for each student – ‘one student at a time.’

In Big Picture schools teachers and students know each other well – ‘small by design’.

Big Picture educators engage the community in the education of young people – ‘a community of learners’.

Big Picture schools achieve exceptionally high student attendance rates, very low dropout rates and provide students with the skills and assistance to enter tertiary institutions.



*“Big Picture is a powerful model for learning. We make learning fit the learner – one student at a time. We bring in mentors and parents and... it works. But Big Picture is a significant new design for schools and so change is inevitable.”*

**Viv White - BPEA CEO**

# YOUR SCHOOL CHANGE JOURNEY

You may wish to explore or implement these ideas in your learning environment with your students. Exploring or implementing these kinds of changes can be exciting and energising. It can also be scary and hard. Sometimes, you might like some assistance.

## BIG PICTURE EDUCATION AUSTRALIA

Big Picture Education Australia is a not-for-profit company aiming to help schools make a journey of change.

We can help you introduce the Big Picture principles to your school. We can also guide your planning and implementation and support your networking with other school communities.

## ONE SCHOOL AT A TIME

Every school is different and you may seek to develop your big picture in different ways.

Some schools are exploring Big Picture ideas with BPEA assistance to decide if the model is good for them. Some stop there; others implement Big Picture ideas.

Some schools are inspired by Big Picture to implement a program or part of a school. We are helping them too.

Other communities are converting whole schools to Big Picture and we are committing to joining them in journeys that may take years.

Some schools are using Big Picture to plan new schools and we assist from the beginning.

Some clusters of schools are joining together to use Big Picture programs for some students and we offer support.

We offer different levels of engagement for different schools.

### CASE STUDY 1: DIFFERENT LEVELS OF ENGAGEMENT

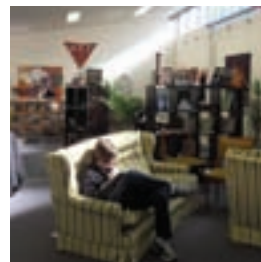
#### Exploring schools

St Johns Park High School from NSW is starting their journey of exploration of Big Picture ideas.

*“We have been looking at the Big Picture website for about a year and have accessed some of the excellent resources. We thought it was time to hear about the experiences of other schools. The ideas are compelling and we are now engaged with Big Picture coaches to build our capacity to develop Big Picture classes and influence all classes in the school.”*

**Sue French – Principal**

**Viv White - Coach**



# WHAT WE OFFER

BPEA offers support for change. We negotiate with each school to deliver the right mix of coaching and support and networking. Here are some of the potential ingredients for change.

## THE BIG PICTURE TEAM

BPEA will appoint an experienced school coach to support your work. Other experts will join us as required.

## GETTING STARTED CONSULTATION

We assist as you negotiate the work. We suggest three 1-1 meetings with the Principal, small group meetings with key staff, conversations with other interested people, and planning meetings with the school executive. Emails and phone advice will be provided along the way. It will take time to draft a plan.

**You can budget for an investment of \$7,500 including preparation, two school visits and follow-up.**

## SCHOOL VISITS

We also suggest you and your team visit other BP schools to see how Big Picture works. We learn powerfully from each other.

## WORKSHOPS

We suggest you use BPEA led workshops for staff and students to focus on student learning and teaching at your school, to reflect and to plan. You might include specific topics related to where the school is 'at' in these workshops (e.g. assessment of student work by exhibition).

**You should plan to invest approximately \$8,600 per two-day workshop for 5 to 15 people**

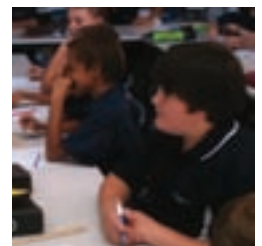
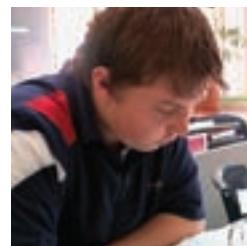
### CASE STUDY 2: DIFFERENT LEVELS OF ENGAGEMENT

#### Inspired schools and Programs

GOTAFE operates a Big Picture education inspired program. There is one advisory now with plans to start another.

*“Big Picture conferences/workshops are like a breath of fresh air and give me a chance to recharge the batteries and focus on what is important as this work is challenging but oh so rewarding when the student takes the initiative with their learning. The coaches at these workshops give us so many practical tools and materials that help us to unlock the learning potential of our students.”*

**Geoff Allemand  
Viv White - Coach**



## COACHING

BPEA can provide coaching support to your school. Coaches can visit regularly and help you identify and explore new ideas and new fields for exploration, help you plan, support the school through implementation, action and reflection stages of your new work, and help the school reflect and embed ideas that work.

### Coaching includes a range of activities like:

- One-to-one leadership conversations with school leaders
- One-to-one teacher coaching conversations
- Small team workshops and observations
- Observing and giving feedback
- Informal conversations
- Leadership group development activities
- Feedback from interactions
- On-line coaching and support for school leaders

**Coaching visits will cost \$3,300 including consultant, coaching, preparation and follow-up.**

## MATERIALS

**Schools will be provided with a set of BPEA resources to help them with their work including:**

- Advisory Teacher guides
- Principal guides
- Mentor guides
- LTI guides
- Parent guides
- Student guides
- Posters
- Learning cycle books and more.

**If you become a member of the BPEA network, all materials are discounted.**

### CASE STUDY 3: DIFFERENT LEVELS OF ENGAGEMENT

## Conversion Schools

Yule Brook College is a Big Picture Conversion and Exhibition School. It joined Big Picture Education Australia in January 2007. The Big Picture program now operates across Years 8, 9 and 10 in every classroom and with every student.

*“We have been using Big Picture ideas for years, and it has changed our school for the better. Big Picture coaches have been with us most of the way. They help us reflect and improve what we do. We have also had great networking opportunities.”*

**Eric Radice – Deputy Principal  
John Hogan – Coach**



# NETWORKING LEARNING FROM EACH OTHER

BPEA can link your school into a national and international network of schools working on the Big Picture. You can share your story, learn from some and teach others.

The BPEA National Network brings together and connects the schools around Australia that are doing this work. BPEA facilitates visits to member schools.

We can also connect you internationally to schools and thinkers who might inspire, support and challenge your thinking or learn from your practice. We organise regular international school visits and can also offer international coaching (via Skype, teleconference or visit)

We hold annual conferences and meetings and bring school reform leaders to Australia to stimulate and encourage your work and to share your insights.

Your investment in networking depends on how many of these opportunities you take up.

## RESEARCH AND COMMUNICATIONS

Documenting and measuring your work will help your change process and also help other schools in the network. BPEA will connect you with academics and help you gain accreditation for the work you do. We can indentify and document your learning progress of your school and the students using multiple sources of evidence.

**Schools usually invest \$18,000 a year in research and communications including consultant, researcher and media recorder visits, preparation and follow-up.**

### CASE STUDY 4: DIFFERENT LEVELS OF ENGAGEMENT

#### Cluster of schools

Launceston City Campus is a Big Picture School in development. The idea is that a cluster of Tasmanian schools has joined together to run a Big Picture schools for some students from each school.

*“Transforming learning environments guided by Big Picture distinguishers requires the re-conceptualisation of present mental models. Frequent dialogue including regular coaching conversations with BPE leaders is how my personal mental models have been reshaped. Our understandings are deepened one conversation at a time.”*

**Stephen Walley - Principal**



## PROFESSIONAL DEVELOPMENT

BPEA also offer professional development workshops focusing on the Big Picture model. We organise a five day induction course.

### We also run BP-specific workshops on:

- exhibitions,
- projects,
- internships,
- mentors
- advisory etc.

### BPEA also hosts specific professional learning activities including:

- Leadership for Community Engagement.
- Personalisation of Learning
- Connecting Lives and Learning.
- Assessment by Exhibition.
- Student Project Development...
- Student Internships and Using Mentors.
- Using Technology
- Numeracy across the Curriculum.
- School Team and Individual Coaching
- Classroom Observation and Peer Support
- Leading Action Learning
- Protocols to look at Student Work
- And others

We can bring any of these ideas to the school and create a unique experience to suit your context.

## YOUR SCHOOL JOURNEY WITH BPEA

Your school journey is unique and so are your requirements for coaching and consulting help.

Let's discuss your needs and we'll come up with fully budgeted proposal for your school or program.

If you agree then we can create and sign a Memorandum Of Understanding and a Service Agreement in which our activities and costs will be clearly defined.

**Contact us to start the conversation.**

## CONTACTS

### Address:

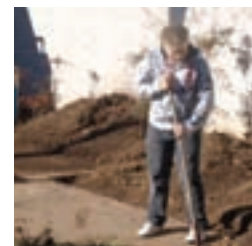
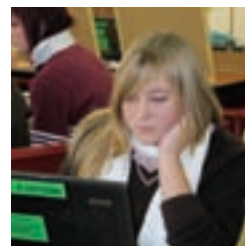
Big Picture Education Australia  
PO Box 836  
Williamstown Vic 3016

### Phone:

(02) 9590 5341

### Website:

[www.bigpicture.org.au](http://www.bigpicture.org.au)



# Big Picture

EDUCATION AUSTRALIA

ONE STUDENT AT A TIME IN  
A COMMUNITY OF LEARNERS

SMALL SCHOOLS BY DESIGN

## CONTACTS

**Address:**

Big Picture Education  
Australia  
PO Box 836  
Williamstown Vic 3016

**Phone:**

(02) 9590 5341

**Website:**

[www.bigpicture.org.au](http://www.bigpicture.org.au)

